



FLOATING FOUNTAIN PUMP (AERATOR) **WF-20000**



360° DEGREE SPRAY

STRONG AERATION

FLOATS ON THE WATER LEVEL

SUITABLE FOR FISH PONDS, GARDEN
RIVER AERATION, ETC.

To ensure your fountain pump is set up and running correctly, and to prevent any accidental damage or injury, please read and follow the below instructions carefully before using your product.

SAFETY

IMPORTANT! Disconnect the mains electricity supply before attempting any installation / maintenance of any kind. Do not attempt to modify this unit in any way and only use the recommended parts for replacement.

- The WF-20000 fountain pump should never be run dry as this will cause the unit to overheat and cause permanent damage.
- All connections must be earthed.
- The power cord of this appliance cannot be replaced; if the cord is damaged, the appliance should be discarded. Never cut the cord.
- Do not connect to any voltage other than that stated.
- Do not place in liquids other than water.
- Do not use with water above 95°F or 35°C.
- Do not use with water below 39.2°F or 4°C.
- Do not carry or pull the unit by its electrical cable.
- Do not use this unit if it has a damaged cord, if it is malfunctioning or if it is dropped or damaged in any manner
- Do not attempt to modify this unit in any way. Only use attachments and the recommended parts for replacement recommended by the manufacturer.
- Before installing, maintaining or handling your equipment, or before placing your hands in your pond, ensure that the unit is disconnected from the electricity supply.
- Always disconnect any electrical devices when not in use.
- Carefully examine your fountain aeration pump after installation. Do not connect the unit to the mains if there is water on any parts not intended to be wet.

- To avoid injury, do not touch hot or moving parts such as, but not limited to impellers.
- If the appliance shows any signs of water leakage or the RCD unit switches off, disconnect the unit from the power supply and consult the retailer where you purchased the unit.
- Do not install or store this unit where it will be exposed to temperatures near to 4°C / 39.2°F. In freezing conditions, remove and store the unit in a sheltered area ensuring all water has been drained from the filter.
- Do not bury the cord for this unit. Ensure it does not cause a trip hazard or it at risk from damage from lawn mowers, strimmers or other garden equipment.

Please note – this appliance can be used by children aged from 8 years and above and persons with reduced physical, sensory or mental capabilities or lack of experience and knowledge, provided they are given supervision and instruction concerning use of the appliance and understand the hazards involved. Children must not play with the appliance. Any maintenance must not be made by children without supervision.

ELECTRIC

This unit comes complete with a generous supply of 3 core cable, however should any additional cable be required, the use of an approved waterproof cable connector with a proper rating is essential. A cord rated for less amperes or watts than the appliance rating may overheat.

Please Ensure:

- The power supply must be earthed and fused at 3amps.
- You regularly inspect the cable for damage and deterioration.
- Do not connect to any voltage other than that stated.
- You consult a qualified electrician if in doubt about any aspects of wiring.
- A residential current device (RCD) is used for additional safety
- You have complied with Local Electricity Authority regulations if permanently installing to the mains supply.

Please Ensure: The power supply must be earthed and fused at 3amps. Regularly inspect the cable for damage and deterioration. Consult a qualified electrician if in doubt about any aspects of wiring.

INSTALLATION & USE

Please read the below instructions carefully before beginning to set up your filter system. **DO NOT CONNECT THE UNIT TO THE MAINS UNTIL SET UP IS COMPLETE AND UNIT IS FILLED WITH WATER.**

WF-20000 is suitable for fish ponds, small garden river aeration and landscape fountains.

1. Attach one end of the rope to the buoy. Repeat this for at least two other edges (diagonal directions).



2. Tie the other ends of the rope to the pegs.
3. Fix the pump by inserting the pegs firmly into the ground. Make sure they are secure.
4. **IMPORTANT!** When fixing, the motor part must be completely submerged to avoid overheating.

MAINTENANCE

To ensure optimal performance and that your unit functions correctly, regular maintenance is essential. Failure to do so may result in damage to your unit and may invalidate your warranty.

We recommend that a regular cleaning and maintenance schedule is followed to ensure responsible fishkeeping. Depending on water volume and stocking levels, regular cleaning of the impeller will help ensure that the product works efficiently and your pond remains healthy.

General Maintenance

IMPORTANT! Failure to carry out routine maintenance and/or leaving the pump with reduced/no flow rate for long periods will result in a shorter pump life and will invalidate the warranty. It is recommended to disconnect your pump and clean the impeller and pipework monthly.

Disconnect the mains electricity supply before attempting any installation / maintenance of any kind.

1. Unfix the pegs and take the unit out of water.
2. Hold the main part of the water pump with one hand and rotate the buoy counterclockwise with the other hand to separate the two.
3. Rotate the unit's body counterclockwise and remove the fixing frame.
4. Push the lock clip and rotate along the joint to separate the water filter cover from the lower shell of the main body.

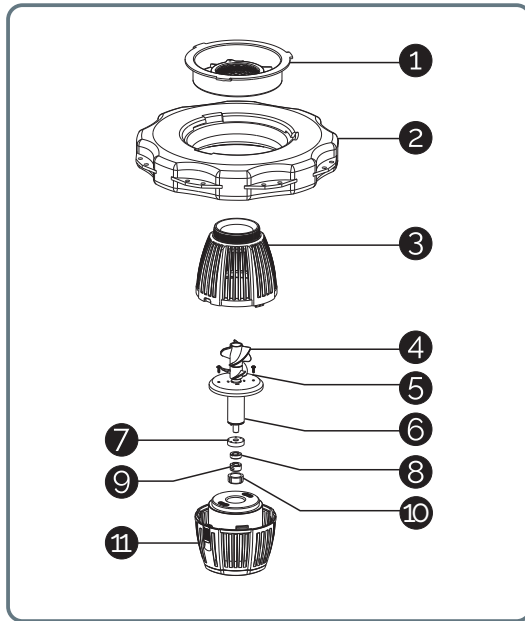


5. Loosen two screws (as shown in the image below) to access the impeller. Ensure that the plastic propeller part of the impeller is attached to the ceramic part and that they have not come apart or split. If this is the case you need to replace your impeller. Wash parts with fresh water carefully.

6. Clean it carefully under running water.
7. Re-assemble.



PARTS DIAGRAM



1 FIXING FRAME

2 BUOY

3 FILTER COVER

4 IMPELLER

5 SCREW

6 PUMP

7 CERAMIC PAD

8 CERAMIC PAD BASE

9 BEARING

10 BEARING BLOCK

11 MOTOR BODY

TROUBLESHOOTING

Slow Flow Rate

1. Clean the pump's housing. Occasionally, large clumps of debris may block it and thus restricting the flow.
2. Locate the impeller and inspect for damage and clear the fittings and parts of any waste build-up.
3. Ensure that the plastic propeller part of the impeller is attached to the ceramic part and that they have not come apart or split. If this is the case you need to replace your impeller.

Unable to start the pump

1. Check power supply is on.
2. Check fuse and cable for any damage.
3. Follow the slow flow rate guide (see above).

If none of the above resolves your issue, or you require spare parts for your pump, please contact the supplier of your unit.

SPECIFICATIONS

MODEL:	WF-20000
POWER (WATTAGE):	90W
OUTPUT:	20000L/H
DIMENSIONS (LxWxH) (mm):	275 x 252 x 420
FOUNTAIN HEIGHT:	1m
FOUNTAIN DIAMETER:	3m
CABLE LENGTH:	10m (Plug not included)
VOLTAGE:	220-240v / 50Hz

WARRANTY

The All Pond Solutions WF-20000 Pond Pump is guaranteed against defects in material or workmanship under normal pond usage and comes with 12 months warranty for all electrical parts. The warranty period commences from the date of purchase.

If you require support on how to use your unit, replacement parts or if your filter develops a fault during the warranty period, please contact the supplier of your unit.

Non-replaceable, non-perishable and non-serviceable parts will be repaired or replaced free of charge, once the unit is returned with all components along with a valid proof of purchase and postage paid. We reserve the right to replace or repair the unit at our discretion.

Please be aware that perishable parts that are subject to normal wear and tear, such as impellers, impeller covers and motor seals are not covered by your warranty and a charge may be required for replacements of these.

This warranty does not apply to any unit that has been subjected to misuse, accidental damage, negligence, tampering or customisation. It does not apply to units which have been assembled incorrectly, improperly maintained, or where the instructions and safety information in this manual has not been followed correctly.

No liability is assumed with respect to loss or damage to livestock or personal property irrespective of the cause thereof.

Please ensure that only genuine All Pond Solutions components are used when completing a replacement or repair. Spare parts are available at our official website or from your local supplier.

Before returning your unit under warranty terms, check that all setup and maintenance instructions have been correctly followed. If you are in doubt, please contact your local aquatic retailer for further advice before returning the product.

This does not affect your statutory rights.



www.allpondsolutions.co.uk

All Pet Solutions Limited Trading as All Pond Solutions
Unit 203 Riverside Way, Uxbridge, Middlesex,
England, UB8 2YF