

# ASSEMBLY

7



After standing up the cabinet, screw on the top panel. NOTE - the top panel should overhang the cabinet slightly (see image)

8



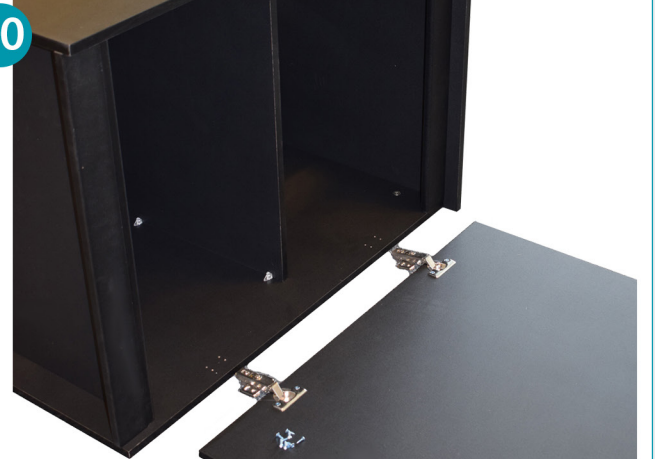
Use a small mallet to hammer in 4x shelf supports into the sides. Insert the shelf. NOTE - 45cm model does not include shelf.

9



Screw on the two hinges to the cabinet door(s).

10



Lay the cabinet on its side with hinge holes facing up. Insert screws & attach the hinges to the cabinet. Repeat for 91/120cm models.

11



Use a small mallet to hammer the feet into the cabinet base. Insert three feet per side (NOTE - there are no pre drilled holes)

12



Bring the cabinet back to standing. Adjust hinge screws if necessary to ensure that the door(s) hangs straight.



AllPondSolutions®  
aquarium range



# MARINE FISH TANK & CABINET

45/67/91/120cm

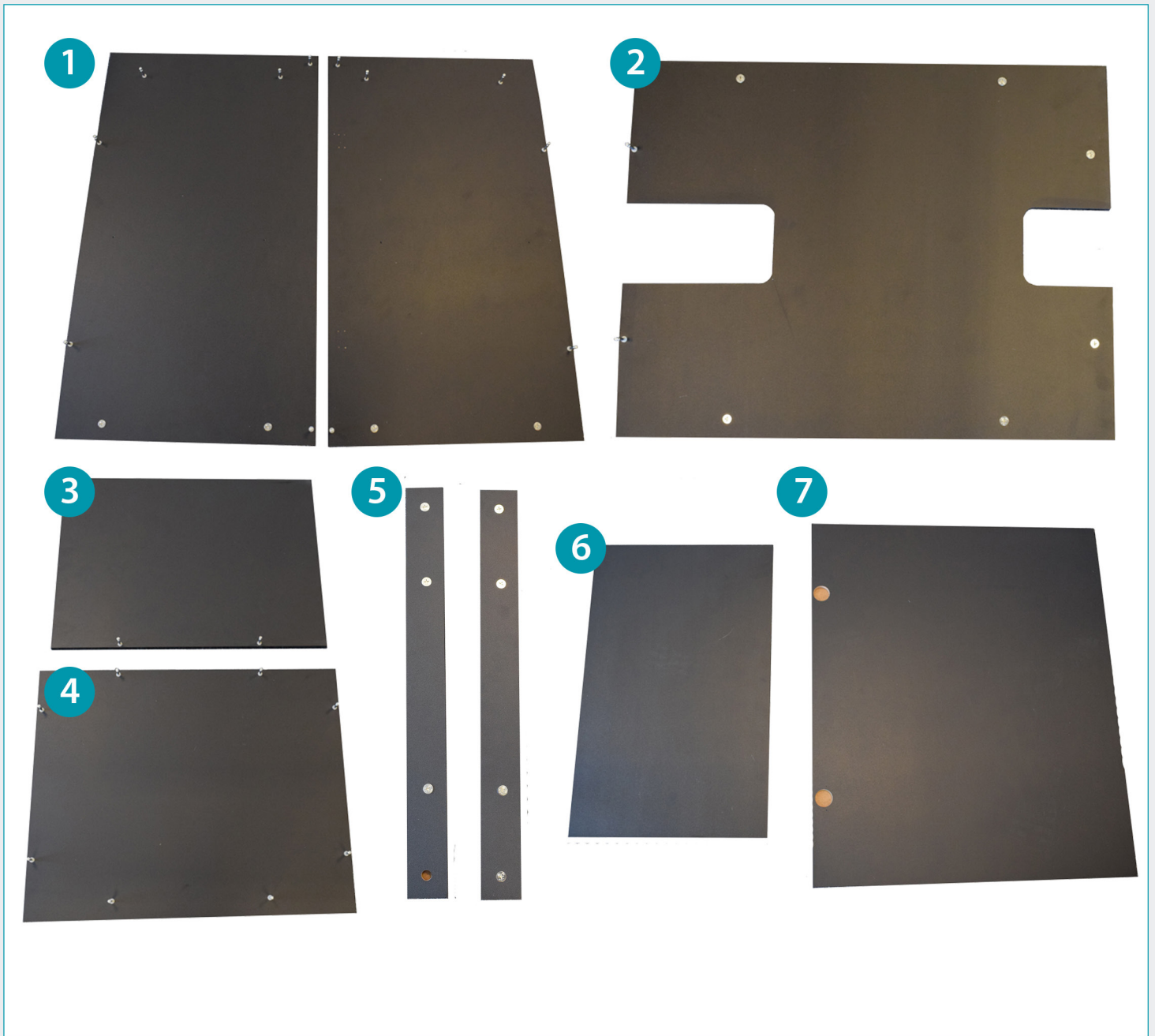
## ASSEMBLY GUIDE





# PARTS LIST

NOTE - images below are representative of the 67cm model.



1. Side Panels (x2)

2. Back Panel

3. Top Panel

4. Base Panel

5. Strip Panels (x2)

6. Shelf (for 67, 91 and 120cm models only)

7. Door (x2 for 91cm and 120cm models only)

# ASSEMBLY

NOTE - images below are representative of the 67cm model.  
For 91cm & 120cm models, repeat steps 9,10 & 12 for second door.



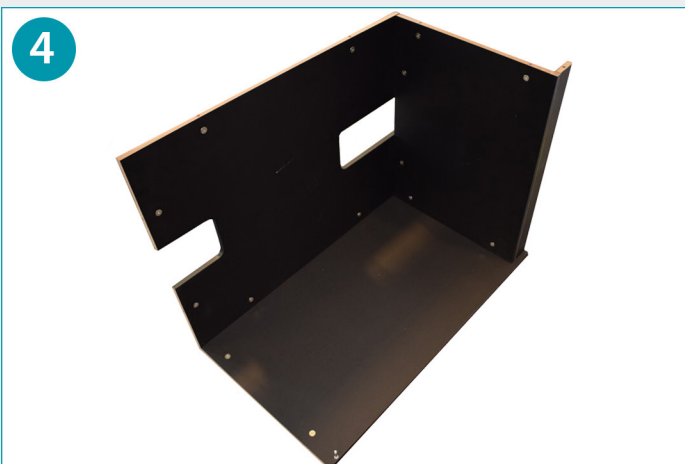
Fix washers and screws into place on all panels. **IMPORTANT** - Make sure not to screw in further than the thread (see image)



Attach stand base to first wooden strip panel.



Attach the back panel.



Place a side panel on the floor and lay the previous three panels on top. Fasten screws.



Attach second wooden strip panel (as shown). Attach second side panel (as per step 4)



Tighten all screws in the base before turning the cabinet over to stand.