

ADJUSTABLE POND WATER FOUNTAIN PUMP INSTRUCTION MANUAL



ECO-2300PPFA
ECO-2700PPFA

- ✓ Powerful filtration
- ✓ Low frequency
- ✓ Low maintenance
- ✓ 2300 L/H Output - ECO-2300PPFA
2700 L/H Output - ECO-2700PPFA
- ✓ Economical energy-saving pump
- ✓ Suitable for fresh and salt water

INSTRUCTIONS

Before installing your All Pond Solutions ECO pump ensure you have read the instructions and taken note of all safety advice. If you have any further questions or concerns please contact the retailer before installing the ECO system.

ELECTRIC

The pump comes complete with a generous supply of 3 core cable, however, should any additional cable be required then the use of an approved waterproof cable connector is essential.

- Power supply must be earthed and fused at 3 amps
- Regularly inspect cables for damage and deterioration
- Always use a residual circuit device (RCD) for additional safety
- For permanent installation to mains supply or outdoor use it is your responsibility to comply with the regulations of the local electricity authority
- Consult a qualified electrician if unsure about any aspect of wiring

The wires in the mains electrical lead are coloured in accordance with the following code (image1):

BLUE - Neutral (marked with an "N" In most terminal connections)

BROWN - LIVE (marked with an "L" in most terminal connections)

GREEN/YELLOW - EARTH (marked "E" or in most terminal connections)

Building Regulations England and Wales 2005

Installation of this product for outdoor use is classified 'notifiable' and requires you to inform the local authority building control department prior to installation for approval.

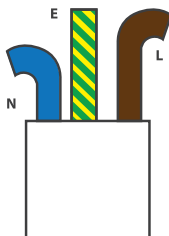


image1

SAFETY

IMPORTANT: Disconnect the mains electricity supply before attempting any installation/maintenance or handling of any kind.

- Only run your PP fully submerged
- The PP should never be run dry as this will cause the unit to overheat and cause permanent damage
- Do not attempt to modify this unit in any way and only use the recommended parts for replacement
- All connections must be earthed
- Do not connect to any voltage other than that stated on the pump
- Do not place in liquids other than water
- Do not use in water above 90°F or 30°C

OPERATION

- ① Assemble the ECO pump as shown on diagram
- ② Ensure attached additional pipework secured using clip/bracket
- ③ Fully submerge pump-part on flat surface
- ④ Power ON

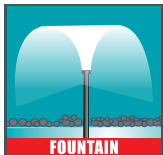
MAINTENANCE

- At regular intervals dependent on water conditions it will be necessary to clean the unit and remove any waste build-up from filtration grille to prevent blockage and loss of flow
- Regularly inspect pump and cable for damage and excessive wear

Important: Disconnect mains electricity supply before handling or attempting maintenance.

1

YEAR GUARANTEE

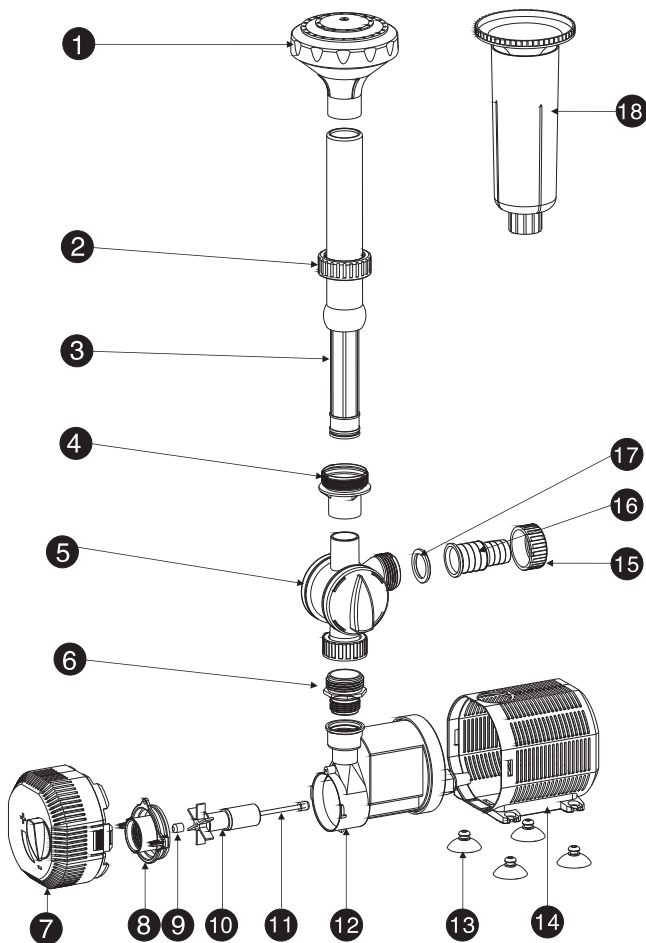


FOUNTAIN

ECO

ENERGY SAVING





PARTS DIAGRAM

1	FOUNTAIN HEAD (1)	10	IMPELLER
2	SHAFT NUT	11	SHAFT
3	EXTENDABLE SHAFT	12	MOTOR
4	SHAFT CONNECTOR	13	SUCTION CUPS
5	OUTLET VALVE	14	REAR CASING
6	OUTLET CONNECTOR	15	OUTLET NUT
7	FRONT CASING	16	OUTLET HOSETAIL
8	IMPELLER COVER	17	HOSETAIL O-RING
9	RUBBER END CAP	18	FOUNTAIN HEAD (2)

SPECIFICATION

MODEL	ECO-2300PPFAF	ECO-2700PPFA
OUTPUT	2300 L/H	2700 L/H
POWER	35W	45W
VOLTAGE	220-240V/50Hz	220-240V/50Hz
H-MAX	2m	2.5m
HOSE OUTLET	¾ - 1" / 18mm – 24mm	¾ - 1" / 18mm – 24mm
WEIGHT	1.8kg	1.2kg
CABLE LENGTH	10m	10m

WARRANTY INFORMATION

Standard 12 month warranty will apply to all new All Pond Solutions products from date of purchase. Exclusions include perishable and consumable items such as foams, bulbs and impellers. Warranty valid in the event of an established electrical or manufacturing fault.

Warranty may not apply in the event of the following: water ingress, misuse, negligence, improper use, failure to follow adequate maintenance guidelines and accidental damage.

This does not affect your statutory rights.

In the event of product failure please return unit to retail outlet with valid proof of purchase.

